



**B680H:** new 24V hydraulic barrier.  
Innovation in action.

**FAAC**  
*Simply automatic.*

50  
YEARS  
1965 | 2015

# B680H

## Four ways to be unique.



### Safe performance and reliability

The B680H has an Hybrid heart which, together with its “everlasting” springs, allows it to exceed 2,000,000 cycles of continuous-use, raising 8 m beams in less than 6 seconds, in total safety, thanks to the reverse on contact feature.

### Removable housing

The B680H has an internal load-bearing structure and an external removable housing. This design gives the system great stability and permits easy replacement of the housing.





### **Extreme flexibility and optimisation of logistics**

One single model controls passages with a net width from 2 m to 8 m. Its modular beams make the B680H a product which is easy to manage and handle.

### **Full visibility and control of traffic**

The programmable integrated flashing traffic light connector guarantees perfect regulation of traffic, while the LED beam lights adequately signal closing of the passage even under conditions of poor visibility.

# It has no equals but itself.



## Switching power supply

The switching power supply, with high energy efficiency and extended range, ensures operation of barriers from 100 Vac to 240 Vac, protecting them from any changes in voltage occurring with non-optimal power-supply systems.



## Integrated absolute encoder

Absolute encoder kit for complete control of movement and reversing of beam when an obstacle is detected: this ensures that the impact curve can be respected, ensuring that pedestrian passages also comply with safety standards.

## "Everlasting" springs

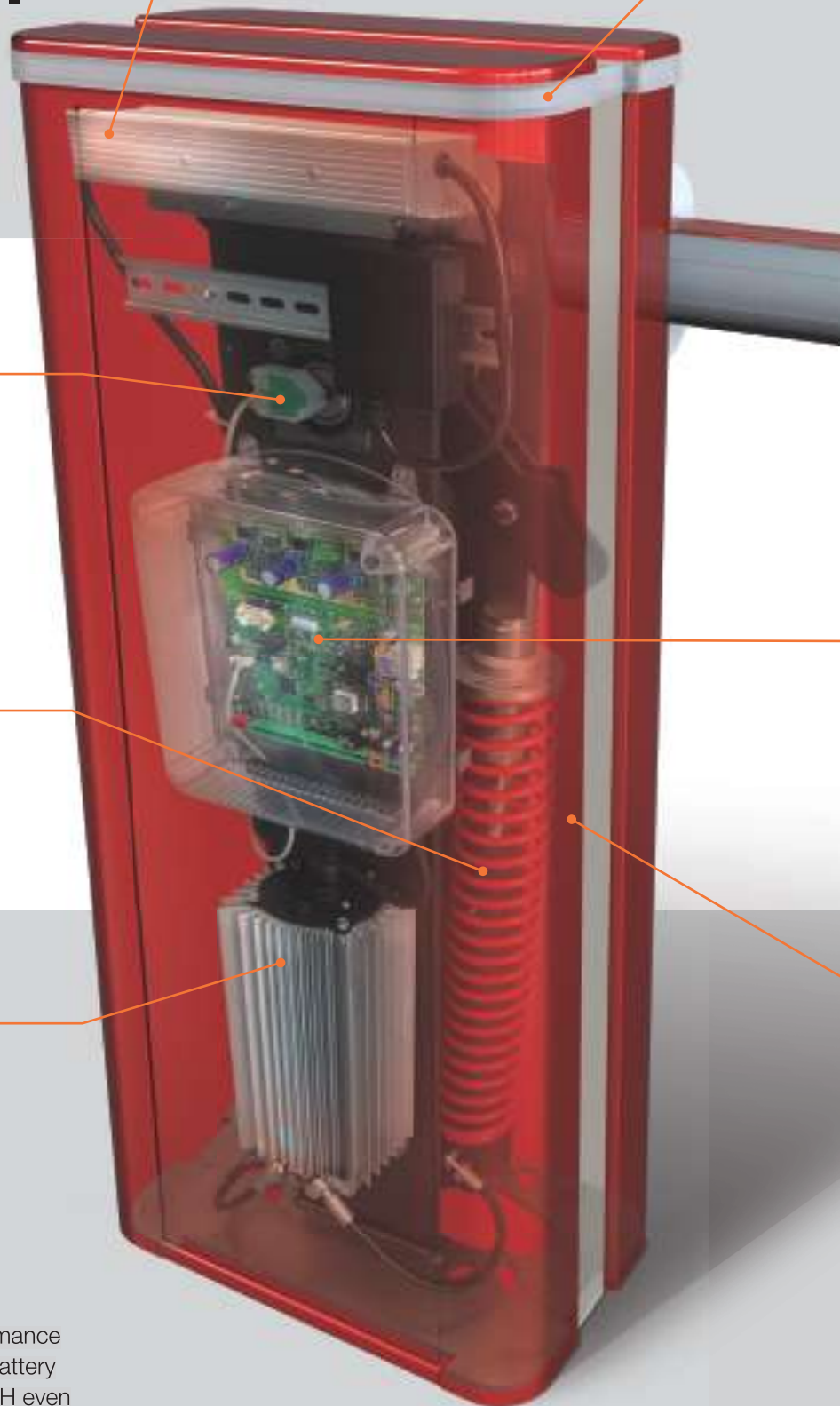
The springs of the B680H have been designed to exceed 2,000,000 cycles.

## 24V Hybrid heart

The hydraulic pump with brushless motor permits the movement of long or short beams at high speed and continuous cycle (100% duty cycle).

## Backup batteries

Installing the XBAT 24 module (high-performance Nickel-Metal Hydride batteries), including battery charger, ensures the operation of the B680H even during a black out.



### Integrated flashing traffic light

The flashing traffic light is entirely integrated into the structure, so it cannot be damaged. The operation of its red and green high-efficiency LEDs may be programmed by the board.

### Elliptically-profiled modular beams

The longest beams are obtained joining two modules up to a maximum of 8.3 m (a net gate area width of 8 m) to ease transportation. Once the modules have been assembled, the connection joint is invisible and LED lighting may be fixed to the entire length of the bar. All the beams are windproof, round or elliptically profiled and are supplied with rubber protection on the bottom.



### INTELLIGENT SOLUTIONS

- Designed so that accessories can be fixed to the housing
- Simple, guided mechanical setup
- Automatic control board setup with just 2 steps
- Control board with transparent box fixed to the upper part of the barrier
- DIN bar already fitted and space for further accessories
- Few part numbers
- Modular beams
- Retrocompatible with foundation plate of FAAC 620 and 640 barriers
- Verification of compliance to protection class IP56 (TÜV Süd)

### Sophisticated electronics with integrated Loop Detector

The E680 microprocessor control board ensures integration of the B680H with complex control systems. It has numerous programmable outputs and inputs and a connector for GSM, Ethernet and Wi-Fi modules. Two integrated, high-sensitivity Loop Detectors ensure the containment of system costs.



2.3 m in less than 1.5 seconds

8.3 m in less than 6 seconds

### Removable housing

The housing is non load-bearing and may be easily replaced, with the upright post remaining in place. It is available in stainless-steel or steel versions, with the innovative, 100-micron, epoxy zinc primer anti-corrosion treatment, with four colours available.

**Easy to assemble:** once the upright has been fitted, with the pocket and the beam, the housing simply needs to be lowered onto it and fixed to the base. If the housing should ever need replacing, simply remove the fixing bolts and pull it up, with no need to dismantle the entire barrier.





# Personality beyond any standards.



Aluminium Grey  
RAL 9006



Pure White  
RAL 9010



Flame-Red  
RAL 3020



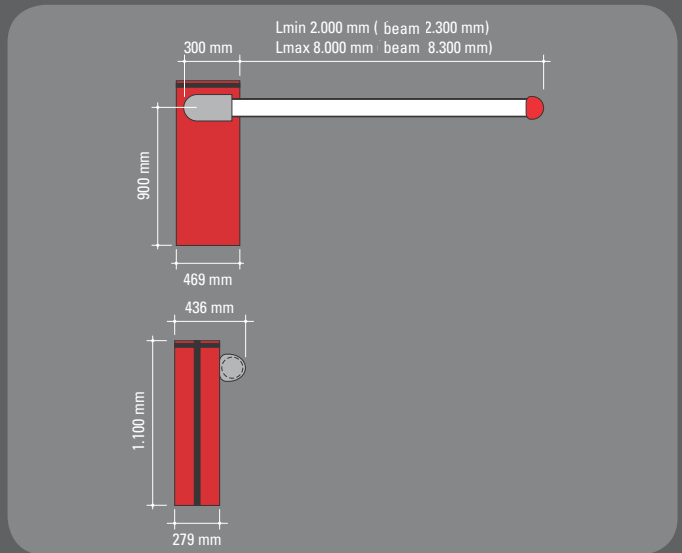
Steel Blue  
RAL 5011



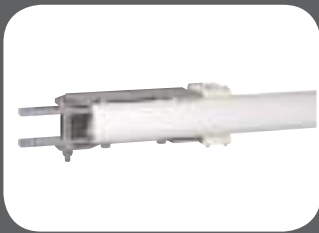
Stainless-steel.

## DIMENSIONS AND TECHNICAL SPECIFICATIONS

Power supply	100 ÷ 240 ~ 50 (60) Hz
Electric Motor	36 Vdc Brushless
Absorbed power	240 W
Absorbed current	1,1 A/230 V
Motor rotation speed	1.000 ÷ 6.000 RPM
Pump capacity	3,2 l/min (max)
Electronic deceleration	Absolute encoder
Operating ambient temperature	-20°C ÷ +55°C
Weight	85 kg (65 kg body + 20 kg housing)
Oil type	FAAC HP OIL
Barrier body treatment	Epoxy zinc anti-corrosion treatment 100 microns + paint
Protection class	IP56
Beam type	Round or elliptical with lights and rubber bumper
Dimensions (LxHxD) (mm)	469x279x1100 (see illustration)



## ACCESSORIES



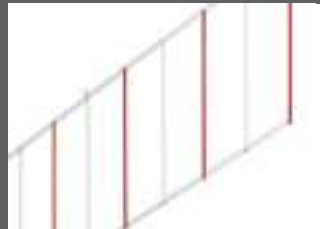
■ Pocket for round pivoting beams



■ Connecting kit for round S-profile beam (max 4 m)



■ Integrated, flashing traffic light



■ Skirt kit, length 2 or 3 m for round S/L profile beams



■ End foot for round S/L profile beams



■ XBAT 24 emergency battery kit

■ Anti-vandalism valve for the B680H  
It protects the hydraulic system if the beam is forced

■ Anti-panic group  
Permits manual release of the beam in case of a black out

■ Beam break-out sensor for round pivoting beams

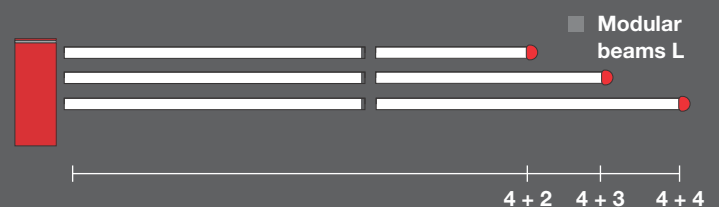
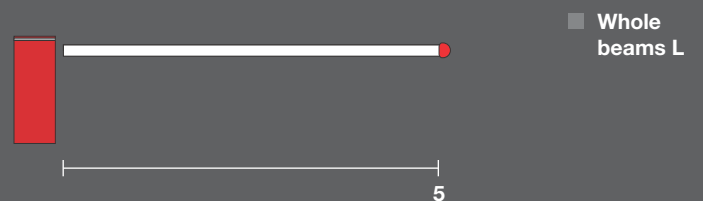
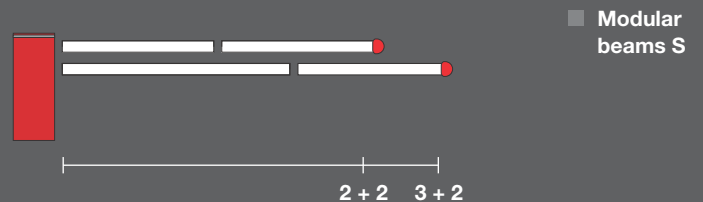
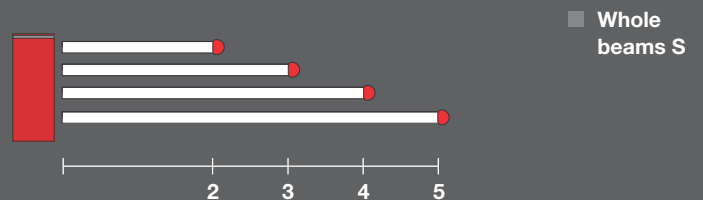
## BEAMS



■ Pocket and balancing spring S



■ Pocket and balancing spring L



Dimensions shown in m.

## HEADQUARTERS

### ITALY

FAAC SpA  
Via Calari 10 - 40069 Zola Predosa (BO)  
Tel. +39 051 61724 - Fax +39 051 758518  
it.info@faacgroup.com - www.faacgroup.com

## SUBSIDIARIES

### ASIA - PACIFIC

FAAC MALAYSIA  
Selangor, Malaysia  
tel. +60 3 5123 0033  
www.faac.international

### AUSTRALIA

FAAC AUSTRALIA PTY LTD  
Homebush – Sydney, Australia  
tel. +61 2 87565644  
www.faac.com.au

### AUSTRIA

FAAC GMBH  
Salzburg, Austria  
tel. +43 662 8533950  
www.faac.at

FAAC TUBULAR MOTORS  
tel. +49 30 56796645  
faactm.info@faacgroup.com  
www.faac-tubularmotors.com

### BENELUX

FAAC BENELUX NV/SA  
Brugge, Belgium  
tel. +32 50 320202  
www.faacbenelux.com

FAAC TUBULAR MOTORS  
7007 CN Doetinchem, The Netherlands  
tel. +31 475 406014  
faactm.info@faacgroup.com  
www.faac-tubularmotors.com

KEMKO AUTOMATIC ENTRANCES  
7007 CN Doetinchem, The Netherlands  
tel. +31 314 378777  
www.kemko.nl

### BRAZIL

INDÚSTRIAS ROSSI ELETROMECAÂNICA SA  
Brasília DF, Brazil  
tel. +55 61 33998787  
www.rossiportoes.com.br

### CHINA

FAAC SHANGHAI  
Shanghai, China  
tel. +86 21 68182970  
www.faacgroup.cn

### FRANCE

FAAC FRANCE  
Saint Priest - Lyon, France  
tel. +33 4 72218700  
www.faac.fr

FAAC FRANCE - AGENCE PARIS  
Massy - Paris, France  
tel. +33 1 69191620  
www.faac.fr

FAAC FRANCE - DEPARTEMENT VOLETS  
Saint Denis de Pile - Bordeaux, France  
tel. +33 5 57551890  
www.faac.fr

### GERMANY

FAAC GMBH  
Freilassing, Germany  
tel. +49 8654 49810  
www.faac.de

FAAC TUBULAR MOTORS  
tel. +49 30 56796645  
faactm.info@faacgroup.com  
www.faac-tubularmotors.com

### INDIA

FAAC INDIA PVT. LTD  
Noida – Delhi, India  
tel. +91 120 3934100/4199  
www.faacindia.com

### IRELAND

NATIONAL AUTOMATION LTD  
Co. Roscommon, Ireland  
tel. +353 71 9663893  
www.nal.ie

### MIDDLE EAST

FAAC MIDDLE EAST FZE  
Dubai Silicon Oasis Operation Center - Dubai, UAE  
tel. + 971 4 3724190  
www.faac.ae

### SCANDINAVIA

FAAC NORDIC AB  
Perstorp, Sweden  
tel. +46 435 779500  
www.faac.se

### POLAND

FAAC POLSKA SP.ZO.O  
Warszawa, Poland  
tel. +48 22 8141422  
fax +48 22 8142024  
www.faac.pl

### RUSSIA

FAAC RUSSIA  
Moscow, Russia  
tel. +7 (495) 646 24 29  
www.faac.ru

### SOUTH AFRICA

FAAC SOUTH AFRICA  
2040 Johannesburg  
tel. +27 11 794 4525  
www.faac.international

### SPAIN

CLEM, S.A.U.  
San Sebastián de los Reyes - Madrid, Spain  
tel. +34 91 3581110  
www.faac.es

### SWITZERLAND

FAAC AG  
Altdorf, Switzerland  
tel. +41 41 8713440  
www.faac.ch

### TURKEY

FAAC OTOMATİK GEÇİŞ SİSTEMLERİ  
SAN. VE TİC. LTD. SIRTEKİ  
İstanbul, Turkey  
tel. +90 (0)212 - 3431311  
www.faac.com.tr

### UNITED KINGDOM

FAAC UK LTD.  
Basingstoke Hampshire, UK  
tel. +44 1256 318100  
www.faac.co.uk

### U.S.A.

FAAC INTERNATIONAL INC  
Rockledge, FL - U.S.A.  
tel. +1 866 925 3222  
www.faacusa.com

FAAC INTERNATIONAL INC  
Fullerton, California - U.S.A.  
tel. +1 714 446 9800  
www.faacusa.com

